

HYPER

SSTe

RTR

MANUAL

***PLEASE REFER TO TRUGGY
NITRO MANUAL FOR COMPLETE
INSTRUCTION***

OFNA BRUSHLESS RTR SPEED CONTROL

The Ofna Brushless RTR Speed Control is a “*PLUG N PLAY*” type.

It is pre-set from the factory.

Do not attempt to change the settings

THIS WILL VOID THE WARRANTY.

WARNING:

DO NOT CHANGE THE GEAR
RATIO IN THIS MODEL. THIS
CAN CAUSE DAMAGE TO
THE MOTOR AND SPEED
CONTROL.

THIS WILL VOID THE WARRANTY.

OFNA BRUSHLESS RTR SPEED CONTROL

This model is set up to use 2 of 7.4v LiPo batteries.



SET UP INSTRUCTIONS:

A: Turn on the transmitter.

B: Make sure throttle trim is set to zero.

C: Install batteries (2 of 7.4v LiPo batteries with Dean style plug).

D: Elevate model so wheels are off the ground. For example:
Use OFNA car stand.

E: Turn the car on using the speed control on/off switch.

F: The transmitter and speed control will go into sync. mode.
This process will take approx. 5 seconds. At this time the
speed control will beep and flash 4 times quickly, then
LED should now stay off.

G: Make sure all controls function properly before use.

Example: Check throttle, brake and steering operation
On car stand.

OFNA BRUSHLESS RTR SPEED CONTROL

H: This speed control is equipped with low voltage cut off. It is recommended that you stop and recharge the batteries when the car slows down or when there is a lack of power.

This will prolong the life of your batteries, motor and speed control.

I: After use please disconnect batteries from ESC to prevent battery and electronics damage.

Please read and follow the instruction manual for safe enjoyment of your OFNA model.

For further information or assistance please contact OFNA Racing.

1-949-586-2910

ESC CALIBRATION

THANK YOU FOR CHOOSING OFNA PRODUCTS.
YOUR HYPER MODEL SHOULD BE CALIBRATED FROM THE
FACTORY.

THE FOLLOW IS THE CALIBRATION PROCEDURE IN CASE ESC
AND RADIO CALIBRATION IS LOST.

IF ASSISTANCE IS NEEDED FEEL FREE TO CONTACT OFNA
TECHNICAL SUPPORT AT 949-586-2910.

STEP 1:

TURN RADIO ON. MAKE SURE THAT THE THROTTLE TRIGGER
AND THROTTLE TRIM ARE IN THE NEUTRAL POSITION.

REFER TO YOUR RADIO MANUAL.

STEP 2:

PRESS THE SET BUTTON ON ESC SWITCH AND TURN ESC
ON AT THE SAME TIME. AT THIS TIME THE ESC WILL FLASH
CONSISTANTLY RED AND BEEP.

STEP 3:

WITH THROTTLE TRIGGER IN THE NEUTRAL POSITION
PRESS THE ESC SET BUTTON. NEXT PULL THROTTLE
TRIGGER ALL THE WAY THEN PRESS THE ESC SET BUTTON.

AT THIS TIME THE ESC WILL FLASH GREEN AND
BEEP 2 TIMES.

STEP 4:

PUSH THROTTLE TRIGGER TO FULL BRAKE POSITION
THEN PRESS THE ESC SET BUTTON. AT THIS TIME
THE ESC SHOULD FLASH GREEN AND BEEP A TOTAL OF 7
TIMES. 3 TIMES IS FOR THE COMPLETION OF CALIBRATION
4 TIMES RELATES TO THE BATTERY CELL COUNT USED.
YOUR ESC SHOULD NOW BE CALIBRATED.

Front / Rear Clip Assembly



94027
4x14mm x8
F/H Screw



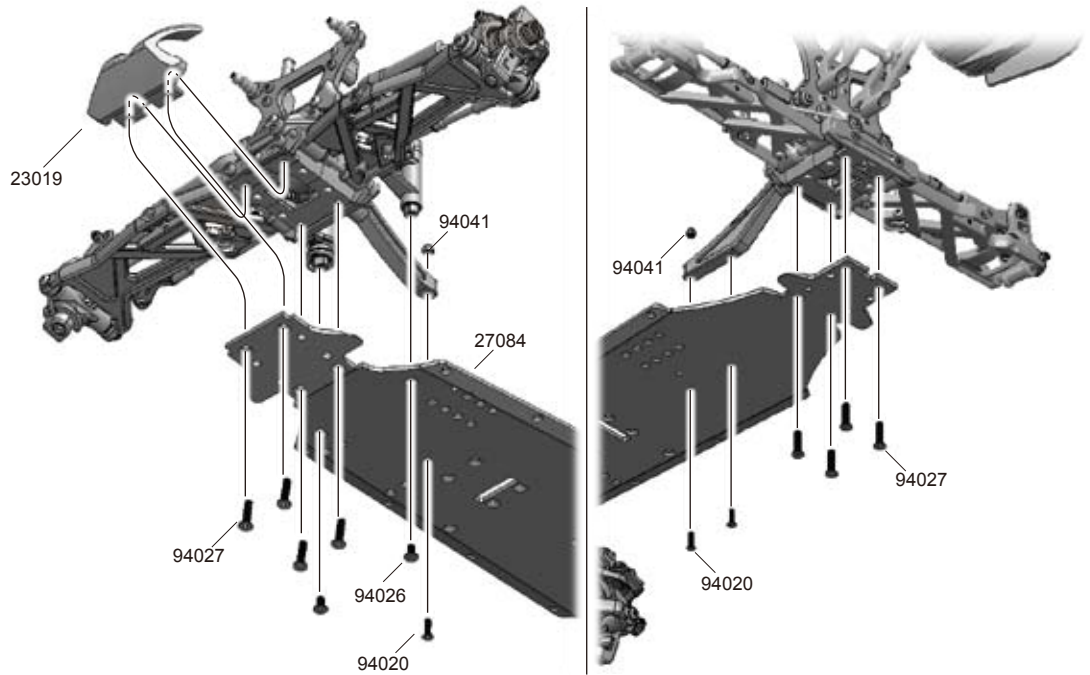
94026
4x10mm x2
F/H Screw



94020
3x12mm x3
F/H Screw



94041
M3 Nut x2



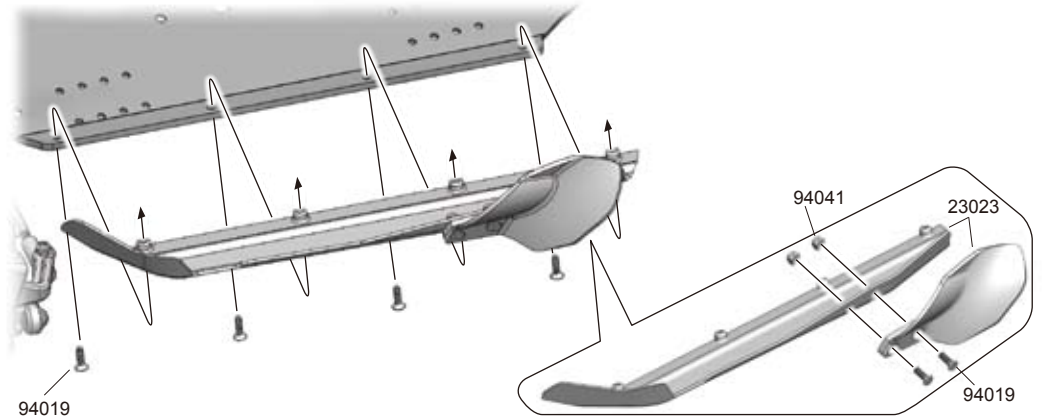
Side Guard Assembly



94019
3x10mm x12
F/H Screw



94041
M3 Nut x4



Center Differential/Motor Unit Assembly



94034
4x4mm x1
Set Screw



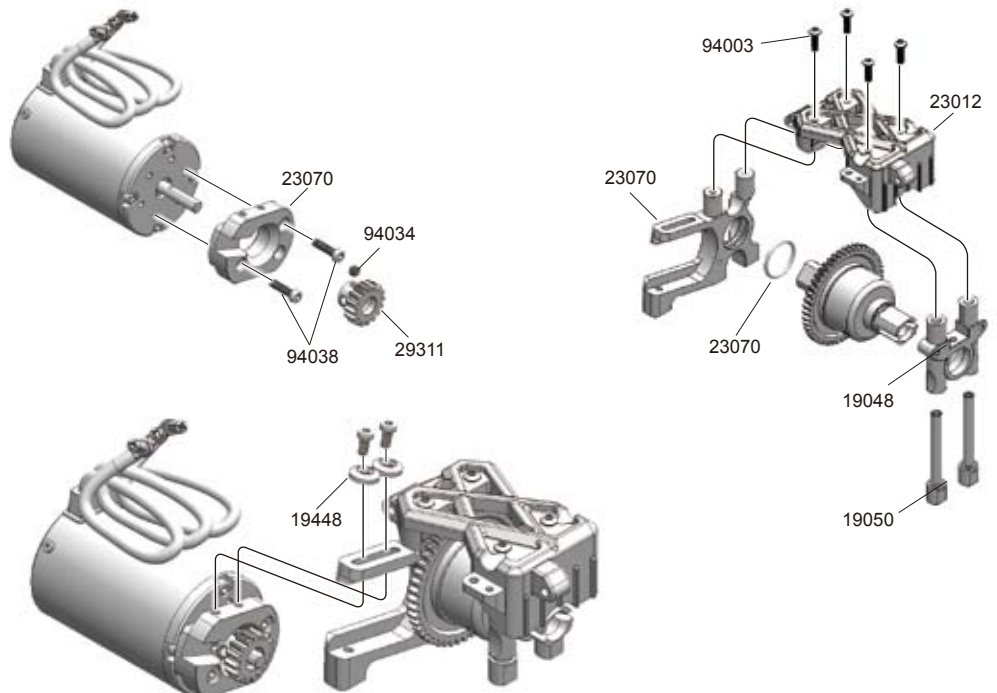
94003
3x10mm x4
B/H Screw



94038
3x12mm x4
Cap Screw



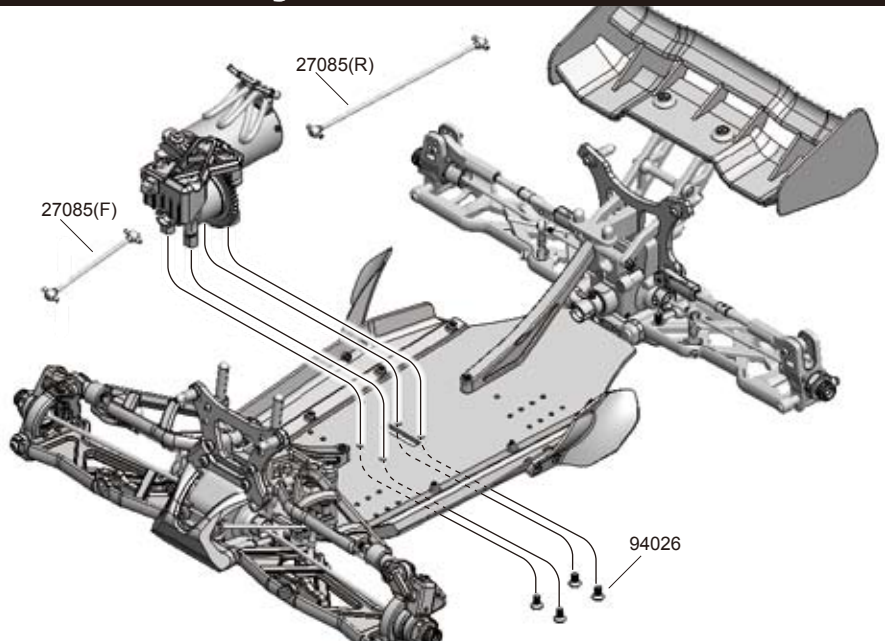
19448
3x10mm x2
Alum. Washer



Center Differential Unit Assembly



94026
4x10mm x4
F/H Screw



Receiver Box/Servo Mount Assembly



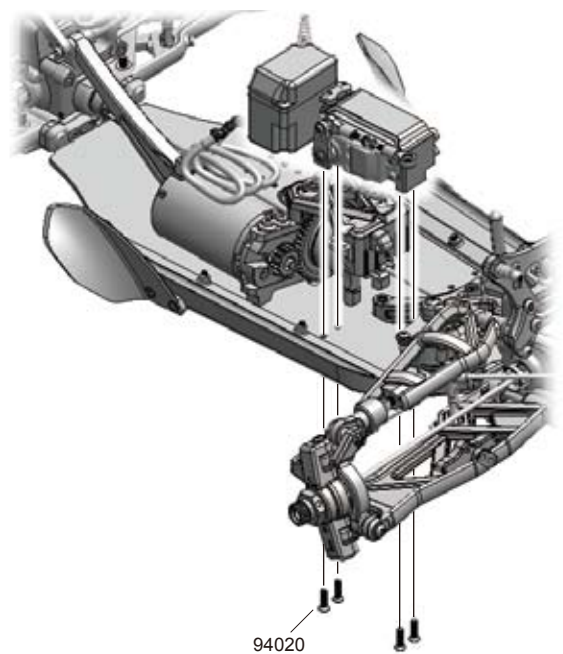
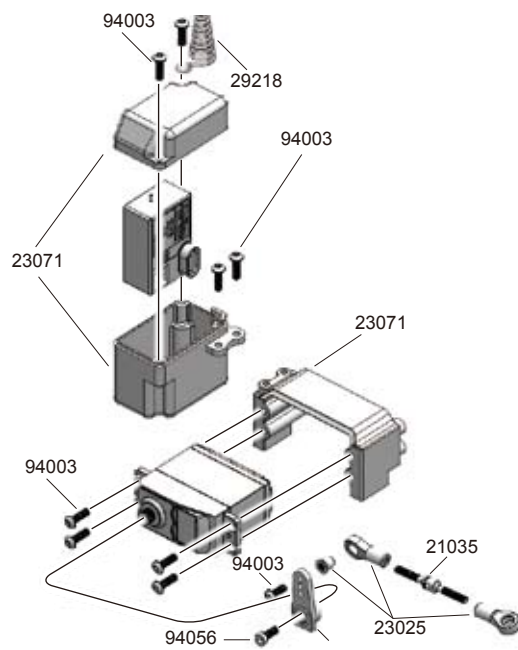
94056
3x8mm x1
Cap Screw



94003
3x10mm x9
B/H Screw



94020
3x12mm x4
F/H Screw



Battery Tray Assembly



94004
3x12mm x4
F/H Screw

